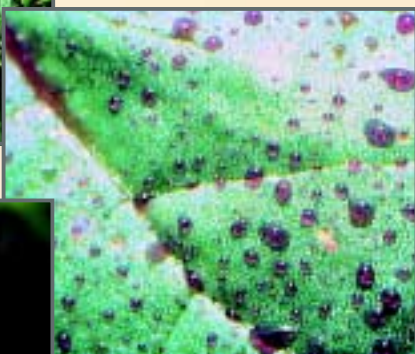


HARDI-ISO F 110 SYNTAL



HARDI-ISO F series:

- **ISO: Flow, colour, and outer dimensions**
- **Un-surpassed liquid distribution**
- **Standard all-round nozzle**
- **SYNTAL - precision moulded thermoplastic: resistant & durable**
- **COLOR TIPS: Safer handling**



HARDI-ISO F 110° Flat fan nozzles according to the ISO standard - regarding flow, colour, and outer dimensions - will fit most nozzle caps. Recommended for use at working pressures ranging from 1.5 to 5 bar. The HARDI-ISO F 110° Flat fan nozzles give you excellent and uniform liquid distribution at 50 cm boom height

The HARDI-ISO F 110° nozzles are recommended for all types of pesticide applications where optimum coverage is demanded.

The HARDI-ISO F 110° Flat fan nozzles are moulded from polyacetal using the latest computer technology for ultimate precision and durability.

Choose the HARDI-ISO F 110° COLOR TIPS for safe and easy handling.



HARDI-ISO F 110 SYNTAL

FORMULAS

Speed check

$$\frac{\text{Distance (m)} \times 3.6}{\text{Time (s)}} = \text{km/h}$$

Application volume

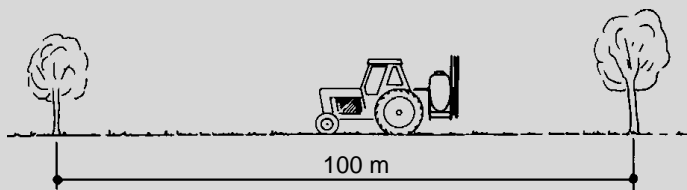
$$\frac{600 \times \text{l/min (per nozzle)}}{\text{Nozzle spacing (m)} \times \text{km/h}} = \text{l/ha}$$

Nozzle output

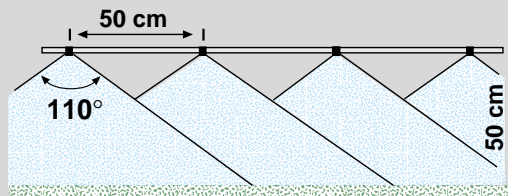
$$\frac{\text{Nozzle spacing (m)} \times \text{l/ha} \times \text{km/h}}{600} = \text{l/min (per nozzle)}$$

Pressure adjustment

$$\left(\frac{\text{New output (l/min)}}{\text{Known output (l/min)}} \right)^2 \times \text{Known pressure (bar)} = \text{New pressure (bar)}$$



$$\frac{100 \text{ m} \times 3.6}{\text{Time (s)}} = \text{km/h}$$



Pressure kPa	Output l/min	Kilometers per hour @ l/ha						
		km/h	30	40	50	75	100	150
S F-01-110 CT Orange 371764 (12pcs 755627) S F-01-110 Orange 371706 (12pcs 755643)								
150	0.28	11.3	8.5	6.8	4.5			
200	0.33	13.1	9.8	7.8	5.2			
250	0.37	14.6	11.0	8.8	5.8	4.4		
300	0.40	16.0	12.0	9.6	6.4	4.8		
400	0.46	18.5	13.9	11.1	7.4	5.5		
500	0.52	20.7	15.5	12.4	8.3	6.2	4.1	

Pressure kPa	Output l/min	Kilometers per hour @ l/ha						
		km/h	30	40	50	75	100	150
S F-015-110 CT Green 371765 (12pcs 755628) S F-015-110 Green 371707 (12pcs 755646)								
150	0.42	17.0	12.7	10.2	6.8	5.1		
200	0.49	19.6	14.7	11.8	7.8	5.9		
250	0.55	21.9	16.4	13.1	8.8	6.6	4.4	
300	0.60	24.0	18.0	14.4	9.6	7.2	4.8	
400	0.69	27.7	20.8	16.6	11.1	8.3	5.5	4.2
500	0.77	31.0	23.2	18.6	12.4	9.3	6.2	4.6

Pressure kPa	Output l/min	Kilometers per hour @ l/ha						
		km/h	30	40	50	75	100	150
S F-02-110 CT Yellow 371766 (12pcs 755629) S F-02-110 Yellow 371708 (12pcs 755649)								
150	0.57	22.6	17.0	13.6	9.1	6.8	4.5	
200	0.65	26.1	19.6	15.7	10.5	7.8	5.2	
250	0.73	29.2	21.9	17.5	11.7	8.8	5.8	4.4
300	0.80		24.0	19.2	12.8	9.6	6.4	4.8
400	0.92		27.7	22.2	14.8	11.1	7.4	5.5
500	1.03			24.8	16.5	12.4	8.3	6.2

Pressure kPa	Output l/min	Kilometers per hour @ l/ha						
		km/h	30	40	50	75	100	150
S F-03-110 CT Blue 371767 (12pcs 755630) S F-03-110 Blue 371709 (12pcs 755652)								
150	0.85	25.5	20.4	13.6	10.2	6.8	5.1	
200	0.98	29.4	23.5	15.7	11.8	7.8	5.9	
250	1.10		26.3	17.5	13.1	8.8	6.6	
300	1.20		28.8	19.2	14.4	9.6	7.2	
400	1.39			22.2	16.6	11.1	8.3	
500	1.55			24.8	18.6	12.4	9.3	

Pressure kPa	Output l/min	Kilometers per hour @ l/ha						
		km/h	150	200	300	400	500	700
S F-04-110 CT Red 371768 (12pcs 755631) S F-04-110 Red 371710 (12pcs 755655)								
150	1.13	9.1	6.8	4.5				
200	1.31	10.5	7.8	5.2				
250	1.46	11.7	8.8	5.8	4.4			
300	1.60	12.8	9.6	6.4	4.8			
400	1.85	14.8	11.1	7.4	5.5	4.4		
500	2.07	16.5	12.4	8.3	6.2	5.0		

Pressure kPa	Output l/min	Kilometers per hour @ l/ha						
		km/h	150	200	300	400	500	700
S F-05-110 CT Brown 371769 (12pcs 755632) S F-05-110 Brown 371711 (12pcs 755658)								
150	1.41	11.3	8.5	5.7	4.2			
200	1.63	13.1	9.8	6.5	4.9			
250	1.83	14.6	11.0	7.3	5.5	4.4		
300	2.00	16.0	12.0	8.0	6.0	4.8		
400	2.31	18.5	13.9	9.2	6.9	5.5	4.0	
500	2.58	20.7	15.5	10.3	7.7	6.2	4.4	

Pressure kPa	Output l/min	Kilometers per hour @ l/ha						
		km/h	150	200	300	400	500	700
S F-06-110 CT Grey 371770 (12pcs 755633) S F-06-110 Grey 371712 (12pcs 755661)								
150	1.70	13.6	10.2	6.8	5.1	4.1		
200	1.96	15.7	11.8	7.8	5.9	4.7		
250	2.19	17.5	13.1	8.8	6.6	5.3		
300	2.40	19.2	14.4	9.6	7.2	5.8	4.1	
400	2.77	22.2	16.6	11.1	8.3	6.7	4.8	
500	3.10	24.8	18.6	12.4	9.3	7.4	5.3	

Pressure kPa	Output l/min	Kilometers per hour @ l/ha						
		km/h	150	200	300	400	500	700
S F-08-110 CT White 371771 (12pcs 755634) S F-08-110 White 371713 (12pcs 755664)								
150	2.26	18.1	13.6	9.1	6.8	5.4		
200	2.61	20.9	15.7	10.5	7.8	6.3	4.5	
250	2.92	23.4	17.5	11.7	8.8	7.0	5.0	
300	3.20	25.6	19.2	12.8	9.6	7.7	5.5	
400	3.70	29.6	22.2	14.8	11.1	8.9	6.3	4.4
500	4.13		24.8	16.5	12.4	9.9	7.1	5.0

The HARDI-ISO F series is available both as single nozzle and as COLOR TIPS (CT), where the nozzle is integrated in the SNAP-FIT.

HARDI SPRAYING EQUIPMENT