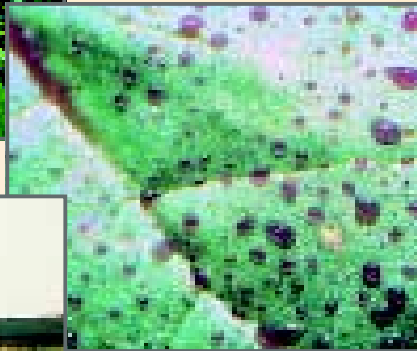


# HARDI-ISO LD 110 SYNTAL

## HARDI-ISO LD series:

- **LowDrift nozzles with reduced risk of drift**
- **ISO: Flow, colour, and external dimensions**
- **Restrictor designed for minimum chemical residues**
- **Turn-&-Clean with the HARDI key - easily removable restrictor**
- **SYNTAL - precision moulded thermoplastic: Resistant & durable**
- **COLOR TIPS: Safer handling**



HARDI-ISO LD 110° LowDrift nozzles conform to the ISO standard - regarding flow, colours and external dimensions - will fit most makes of nozzle caps. Recommended for use at working pressures ranging from 150 to 500 kpa. Optimum distribution is achieved at 50 cm boom height.

The HARDI-ISO LD 110° LowDrift nozzles are recommended when optimum spraying conditions cannot be achieved and spraying cannot be postponed.

The HARDI-ISO LD 110° LowDrift nozzles are moulded from polyacetal using the latest computer technology for ultimate precision and durability.

Chose the HARDI-ISO LD 110° COLOR TIPS for safe and easy handling.



# HARDI-ISO LD 110 SYNTAL

## FORMULAS

### Speed check

$$\frac{\text{Distance (m)} \times 3.6}{\text{Time (s)}} = \text{km/h}$$

### Application volume

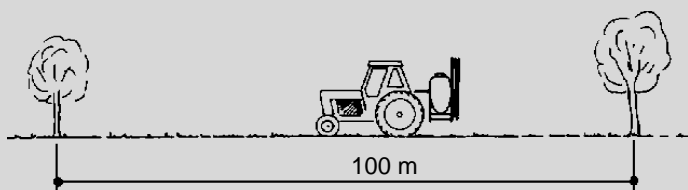
$$\frac{600 \times \text{l/min (per nozzle)}}{\text{Nozzle spacing (m)} \times \text{km/h}} = \text{l/ha}$$

### Nozzle output

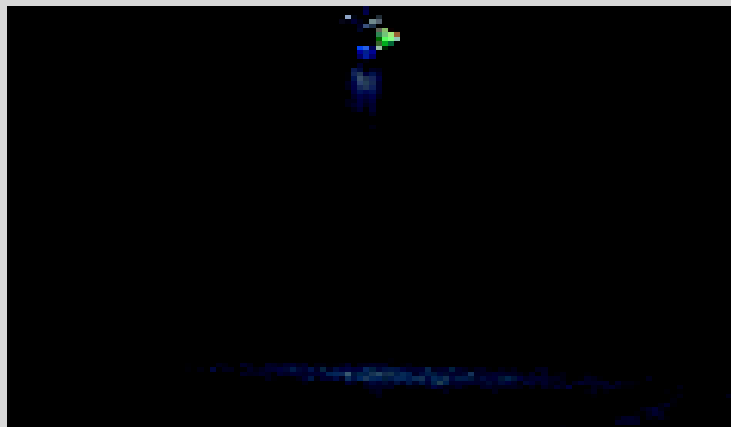
$$\frac{\text{Nozzle spacing (m)} \times \text{l/ha} \times \text{km/h}}{600} = \text{l/min (per nozzle)}$$

### Pressure adjustment

$$\left( \frac{\text{New output (l/min)}}{\text{Known output (l/min)}} \right)^2 \times \text{Known pressure (kpa)} = \text{New pressure (kpa)}$$



$$\frac{100 \text{ m} \times 3.6}{\text{Time (s)}} = \text{km/h}$$



50 cm

50 cm

kpa	l/min	Kilometers per hour @ l/ha						
		30	40	50	75	100	150	200
<b>S LD-01-110 CT Orange 371837 (12pcs 755708)</b>		<b>S LD-01-110 Orange 371817 (12pcs 755698)</b>						
150	0.28	11.3	8.5	6.8	4.5			
200	0.33	13.1	9.8	7.8	5.2			
250	0.37	14.6	11.0	8.8	5.8	4.4		
300	0.40	16.0	12.0	9.6	6.4	4.8		
400	0.46	18.5	13.9	11.1	7.4	5.5		
500	0.52	20.7	15.5	12.4	8.3	6.2	4.1	

<b>S LD-015-110 CT Green 371838 (12pcs 755709)</b>		<b>S LD-015-110 Green 371818 (12pcs 755699)</b>						
150	0.42	17.0	12.7	10.2	6.8	5.1		
200	0.49	19.6	14.7	11.8	7.8	5.9		
250	0.55		16.4	13.1	8.8	6.6	4.4	
300	0.60		18.0	14.4	9.6	7.2	4.8	
400	0.69		20.8	16.6	11.1	8.3	5.5	4.2
500	0.77		23.2	18.6	12.4	9.3	6.2	4.6

<b>S LD-02-110 CT Yellow 371839 (12pcs 755710)</b>		<b>S LD-02-110 Yellow 371819 (12pcs 755700)</b>						
150	0.57		17.0	13.6	9.1	6.8	4.5	
200	0.65		19.6	15.7	10.5	7.8	5.2	
250	0.73		21.9	17.5	11.7	8.8	5.8	4.4
300	0.80		24.0	19.2	12.8	9.6	6.4	4.8
400	0.92			22.2	14.8	11.1	7.4	5.5
500	1.03			24.8	16.5	12.4	8.3	6.2

<b>S LD-03-110 CT Blue 371840 (12pcs 755711)</b>		<b>S LD-03-110 Blue 371820 (12pcs 755701)</b>						
150	0.85		20.4	13.6	10.2	6.8	5.1	
200	0.98		23.5	15.7	11.8	7.8	5.9	
250	1.10		26.3	17.5	13.1	8.8	6.6	
300	1.20		28.8	19.2	14.4	9.6	7.2	
400	1.39			22.2	16.6	11.1	8.3	
500	1.55			24.8	18.6	12.4	9.3	

<b>S LD-04-110 CT Red 371841 (12pcs 755712)</b>		<b>S LD-04-110 Red 371821 (12pcs 755702)</b>						
150	1.13		27.2	18.1	13.6	9.1	6.8	
200	1.31		31.4	20.9	15.7	10.5	7.8	
250	1.46			23.4	17.5	11.7	8.8	
300	1.60			25.6	19.2	12.8	9.6	
400	1.85			29.6	22.2	14.8	11.1	
500	2.07				24.8	16.5	12.4	

## Turn-&-Clean - removal of restrictor

The HARDI-ISO LD series is available both as single nozzle and as COLOR TIPS (CT), where the nozzle is integrated in the SNAP-FIT.

## HARDI ~~Ltd~~ Spraying Equipment

4/5 WATLING CLOSE,  
SKETCHLEY MEADOWS  
HINCKLEY, LEICESTERSHIRE, LE10 3EX  
TELEPHONE: (01455)233811 • FAX: (01455)233815